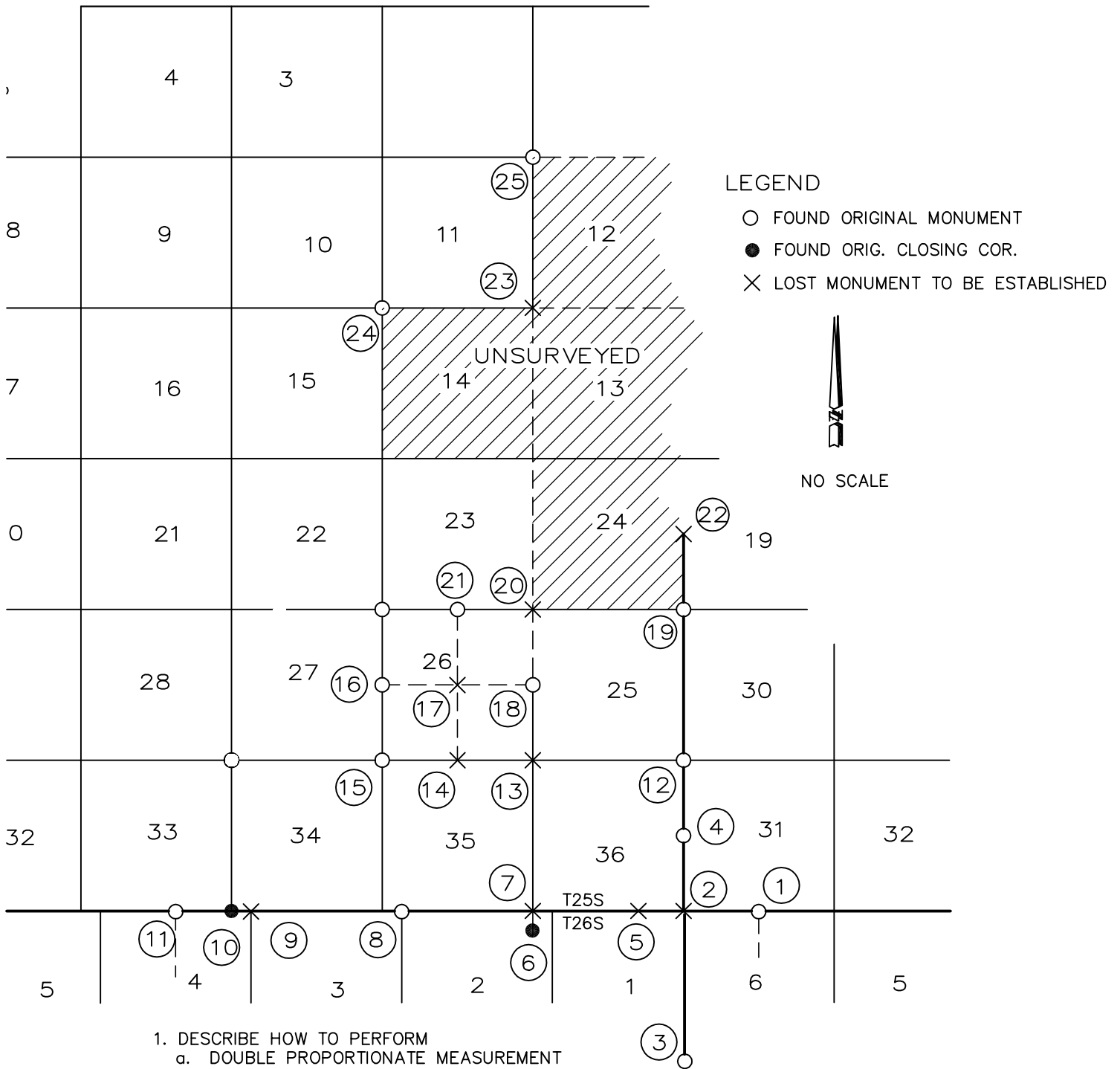


# PL-3



1. DESCRIBE HOW TO PERFORM
  - a. DOUBLE PROPORTIONATE MEASUREMENT
  - b. SINGLE PROPORTIONATE MEASUREMENT
2. EXPLAIN THE METHOD AND LIST THE CONTROLLING CORNERS YOU WOULD USE TO ESTABLISH THE POSITIONS LISTED: 2, 5, 7, 9, 13, 14, 17, 22 AND 23
3. WHAT RECORD MUST BE FILED TO MEET THE REQUIREMENTS OF THE LAND SURVEYOR'S ACT IN THE CASES ABOVE?
4. WHAT IS THE DIFFERENCE BETWEEN THE TERMS CORNER AND MONUMENT?
5. LIST THREE METHODS THAT YOU WOULD EMPLOY PRIOR TO RESORTING TO DOUBLE PROPORTION TO RESET MISSING CORNERS FOR INTERIOR SECTIONS