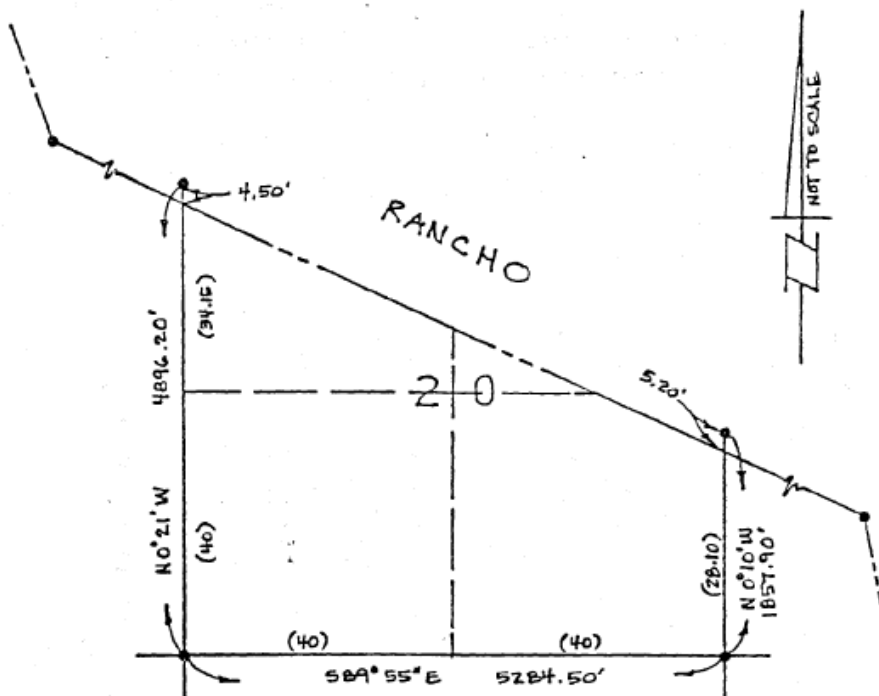


## LS Review – Public Land Questions Set 1

1. The boundaries of the U.S. Public Lands, when approved and accepted by the proper U.S. Government agency, are generally unchangeable, except in which of the following cases?
  - a. Junior rights are interfered with
  - b. Adjacent property owners file suit against the government
  - c. Mexican Land Grants are interfered with
  - d. When the statutory Period of compliance has elapsed
  - e. When a dependent resurvey shows the distance between section corners to actually be 81.00 chains.
  
2. Double proportionate measurement is used to replace lost corners of
  - a. Township corners and interior section corners
  - b. Township corners and exterior section corners
  - c. Northwest sections of a township
  - d. Section corners on a standard parallel
  - e. Mineral surveys and meander corners.
  
3. Section 18 of T21N, R6W was subdivided for the first time about 20 years ago. You wish to retrace that survey. For the north line of the NW 1/4 of the NW 1/4 (also called Lot 1), what measurement should have been used if the official distance for the north line of Section 18, shown in government notes is 78.39 chains?
  - a. 10.00 chains
  - b. 18.39 chains
  - c. 19.20 chains
  - d. 19.60 chains
  - e. 38.39 chains
  
4. The center of a standard section of land is
  - a. The point of intersection of two lines; one run for the NE section corner to the SW section corner, and the other from the NW Sec. corner to the SE Sec. corner.
  - b. A point located 40 chains south and 40 chains West of the NE section corner
  - c. A point located 40 chains north and 40 chains east of the SW section corner
  - d. The point of intersection of a line from the north 1/4 corner to the south 1/4 corner with a line running from the east 1/4 corner to the west 1/4 corner
  - e. A point identified by the intersection of the meridian line and the range line\
  
5. The main purpose of using proportionate measure to restore lost corners is to:
  - a. Compare present measurement with original so that the footsteps of the original surveyor may more closely be followed.
  - b. Distribute excess or deficiency in an equitable manner to the junior adjoiners.
  - c. Provide a uniform standard for all surveyors.
  - d. Meet federal requirements as outlined in the "manual of instructions for the survey of the public domain" published by the bureau of land management.
  - e. Equally distribute mistakes made in the original survey.

6. In the surveys for the public lands of the United States the closing corners along a township line:
- Are used to establish the true location of standard section corners within the township
  - Were established by recent surveys to control the ultimate subdivision of the township
  - Can be accepted as the true location of the standard Section corners
  - Are positioned on the ground by double proportionate method
  - Will control the direction of the North-South section line in an East-West direction
7. In trying to find an old original land corner you find that the surveyor, in chaining out the line, crossed a stream at 45.6 chains and set the corner at 51.25 chains total measure. From other lines in the area, you find a very constant chaining factor of 100.00 feet of your measure equals 99.75 feet of the original surveyor's. How far beyond the same point in the stream would you measure to find the original corner today? Assume the stream has not shifted.
- 5.66 feet
  - 66.00 feet
  - 371.97 feet
  - 372.90 feet
  - 373.84 feet
8. The plat shown below shows fractional Section 20. The bearings and distances given in feet are the results of your survey. The information in parentheses is record per the Government Plat. Compute the course for the SW  $\frac{1}{4}$  of Section 20. Explain briefly the steps in the procedure you have followed in your solution.



● Denotes found original corner.

9. Mr. Bud Miller owns the southeast 1/4 of Section 19, Township 10 North, Range 13 East, Mount Diablo Meridian. The sketch below shows the GLO Record Measurements and your measurements.

- Indicate all corners that would be established and the method used to establish them in order to survey Mr. Miller's property.
- After setting the S. E. corner of Section 19, you notice a 42" diameter oak stump bearing N 30° E 42.5 feet from your monument. The GLO notes for that corner recite as follows: "80.00 Point for corner Sec. 19,20,29, & 30/ Set 4' high wood post with raised mound of stone 4' base, 2' high from which a live Oak 42" Diam., bears N 40 1/2 W 28 links dist; a live Oak 30" diam., bears N 35 E 55 links dist". What should be done to determine if this has an effect on your survey?

( ) GLO Measurements

m Your measured distances.

■ Found Evidence of Original Corner



10. You have been commissioned to survey fractional Section 8, T4S, R6W as shown on the official plat below. Your client has requested that all corners be monumented. How would establish each of the required corners.

